

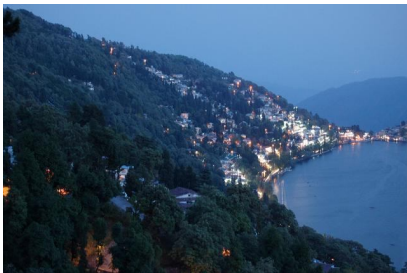


## ... Himalayan Queen ...

### Tour Highlights :

- **Nainital** : - Snow view point, Chidiyaghar, Naini Lake, Nanda Devi, Temple, Ranikhet
- **Corbett** : - Very famous Jim Corbett National Park.
- **Kausani** :- Hill station.

We established our company nine years ago with a craze to offer superior quality of travel and priceless enjoyment for the enthusiastic travellers. We are into designing and executing the holiday packages for families and Honeymooners. We are a complete solution for all your travel needs i.e. Airtickets, Travel Insurance, Car Rentals and VISA assistance.



Naini Lake



Naina Devi Temple.



View of Himalayas.

## Tour Itinerary for 6 Nights / 7 Days.

### Day 01 : Delhi - Nainital :- (311 Km / 8 - 9 hrs)

Pickup in Delhi Airport / Rly. station and Drive to Nainital. a glittering jewel in the Himalayan necklace Blessed with scenic natural splendors. Arrive and proceed to your hotel & rest of the day at leisure.

**Night stay at the hotel in Nainital. (Only Dinner Included)**

### Day 02 : Nainital

In morning after breakfast visit the various picturesque Tals (Lakes) and Naini peak, the highest point In Nainital. Later walk around the Naini Lake, enjoy an optional boat ride on the picturesque Naini Lake or enjoy an optional cable car ride offering a breathtaking view of Nainital town.

**Night stay at the hotel in Nainital. (Breakfast & Dinner Included)**

### Day 03 : Nainital - Kausani :- (120 Kms / 5 - 6 hrs )

After Breakfast Checkout the Hotel And Drive to Kausani, situated at an altitude of 1890 meters and offers some breathtaking views of snow clad Himalayan peaks of the western Garhwal as well as the Doon valley. Proceed to your hotel and rest of the day at leisure.

**Night stay at the hotel in Kausani. (Breakfast & Dinner Included)**

### Day 04 : Kausani

After breakfast today you will proceed on a local sightseeing tour, Visit the ancient temple of Baijnath dedicated to Goddess Parvati on the banks of the River Gomti. In the evening enjoy the 300 km wide panorama of Himalayan ranges namely the Trishul, Nanda Devi and Nanda Kot.

**Night stay at the hotel in Kausani. (Breakfast & Dinner Included)**

### Day 05 : Kausani - Corbett :- (120 Kms / 5 - 6 hrs )

After Breakfast Checkout the hotel and drive to Corbett. Reach in Resorts Rest of the day is at leisure for individual activities.

**Night stay at the hotel in Corbett. (Breakfast & Dinner Included)**

### Day 06 : Corbett

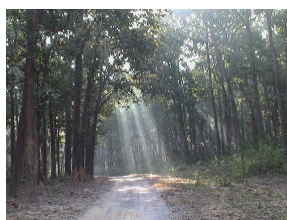
Early this morning after breakfast enjoy a game drive in the park by jeep/canter to view some of the most exotic wild life and the flora & fauna. Lunch at Resort. This afternoon try your luck again to spot the tiger.

**Night stay at the hotel in Corbett. (Breakfast & Dinner Included)**

### Day 07 : Corbett - Delhi

Early in the morning depart for Delhi to catch our Flight from Delhi Airport or Railway station. **(Breakfast Included)**

**Hotel Stay :** 1) Nainital ..... 2 Nights. 2) Kausani ..... 2 Nights. 3) Corbett ..... 2 Nights.



Corbett National Park

- **Tour Price Per Person. ( 01 Oct 2015 to 30 Sept 2016 except Peak Season) :**  
25% Peak Season Surcharge on below price for the period 07 Nov 2015 to 21 Nov 2015 & 20 Dec 2015 to 10 Jan 2016.

Destination	Orange Package Rs.22,500/- Sensible Stay	Grey Package Rs.20,500/- Deluxe Stay	Pink Package Rs.24,500/- Super Deluxe Stay	Purple Package Rs.28,500/- Luxury Stay
<b>Nainital 2 Nights.</b>	<b>Hotel Maharaja</b> <a href="http://www.maharajahotelnainital.com">www.maharajahotelnainital.com</a>	<b>Hotel Aroma</b> <a href="http://www.nainitalaroma.com">www.nainitalaroma.com</a>	<b>Hotel Maharaja</b> <a href="http://www.maharajahotelnainital.com">www.maharajahotelnainital.com</a>	<b>Himalaya Pavilion</b> <a href="http://www.himalayapavilion.com">www.himalayapavilion.com</a>
<b>Kausani 2 Nights.</b>	<b>Hotel Pine Havens</b> <a href="http://www.hotelpinehavens.com">www.hotelpinehavens.com</a>	<b>New Pine Hotel</b> <a href="http://www.newpinekausani.com">www.newpinekausani.com</a>	<b>Hotel Pine Havens</b> <a href="http://www.hotelpinehavens.com">www.hotelpinehavens.com</a>	<b>Suman Royal Resort</b> <a href="http://www.sumanroyalresort.com">www.sumanroyalresort.com</a>
<b>Corbett 2 Nights.</b>	<b>Safari Park</b> <a href="http://www.hotelsafaripark.com">www.hotelsafaripark.com</a>	<b>Safari Park</b> <a href="http://www.hotelsafaripark.com">www.hotelsafaripark.com</a>	<b>Tiger Camp</b> <a href="http://www.tiger-camp.com">www.tiger-camp.com</a>	<b>Tiger Trail</b> <a href="http://www.ashokastigertrail.com">www.ashokastigertrail.com</a>

- **Cost Includes :**
  1. Accomodation on Twin Sharing Basis in the choice of Hotels.
  2. Daily Breakfast and Dinner.
  3. Non A.C. Indica for entire Tour starting from Delhi.
  4. Fuel, Toll, Parking charges, Driver allowance.
- **Cost Excludes :**
  1. Cost for Any Airfare, Any Train fare, Any Bus Fare, Insurance Premiums etc.
  2. Cost for optional Tours, Up-gradation Charges, entry fee & Guide charges.
  3. Any transportation which is not mentioned in the itinerary.
  4. Payment for service provided on a personal request basis.
  5. Personal expenses such as phone calls, laundry, soft drinks, mineral water, incidentals, porter charges, tips etc.
  6. Expenses incurred due to change in oil price, mishaps, landslide, strikes, political unrest etc. In such case extra will be charged as per actual which will be collected from the guest directly.
  7. Meals/Food other than specified.
  8. The item which is not mentioned in the 'Cost Includes'.



... 4 ...

Please Note. :

A) The hotel rooms are subject to availability. They may change at the time of booking.

B) Palande Tourism's General BOOKING AND CANCELLATION RELATED TERMS & CONDITIONS APPLICABLE.

C) Service Note:

Offer is based on minimum 2 adults on a tour.

Hotel check-in is after 12:00 hrs and actual check-in would take place as per the flow of the tour itinerary or local circumstances.

D) Itinerary:

Itinerary is prepared on experience and normal practice of local guide and supplier. Local guide / Local supplier has got all the rights to amend due respect to the local condition/circumstances to serve you better. The services which are not offered due to some local circumstances or during the process of revising the itinerary, the REFUND would be given for the NON-RENDERED services on the basis the policy of the service rendering company/mediator/supplier.

E) Booking Procedure: We request to issue us the details and documents as follows

1. Acceptance letter: Acceptance by signing the booking form and an offer letter document.
2. Chq/Draft: 100% in advance to process your request to our suppliers.
3. Name list: In the format of SURNAME/NAME/FATHERS NAME/ADRESS/TEL/PASSPORT ISSUE & EXPIRY DATE

### Our Services :



: **Honeymoon and Family Tours :**  
: **Air ticketing :**  
mail : [enjoy@palandetourism.com](mailto:enjoy@palandetourism.com)



: **Car and Bus rentals :**  
: **Travel Insurance :**  
: **VISA submission :**  
mail : [palandetl@gmail.com](mailto:palandetl@gmail.com)



: **Wildlife Tours :**  
: **Adventure Tours :**  
: **Leisure Tours :**  
mail :  
[sales@flycatcheradventures.com](mailto:sales@flycatcheradventures.com)  
[aditya@flycatcheradventures.com](mailto:aditya@flycatcheradventures.com)

2/3, Erandwane, Karve Road, Pune 411 004.  
Tel +91 20 65000994. Fax +91 20 25467069. Cell +91 9860578663 / 9881138909.

visit us @ [www.palandetourism.com](http://www.palandetourism.com) / [www.flycatcheradventures.com](http://www.flycatcheradventures.com)